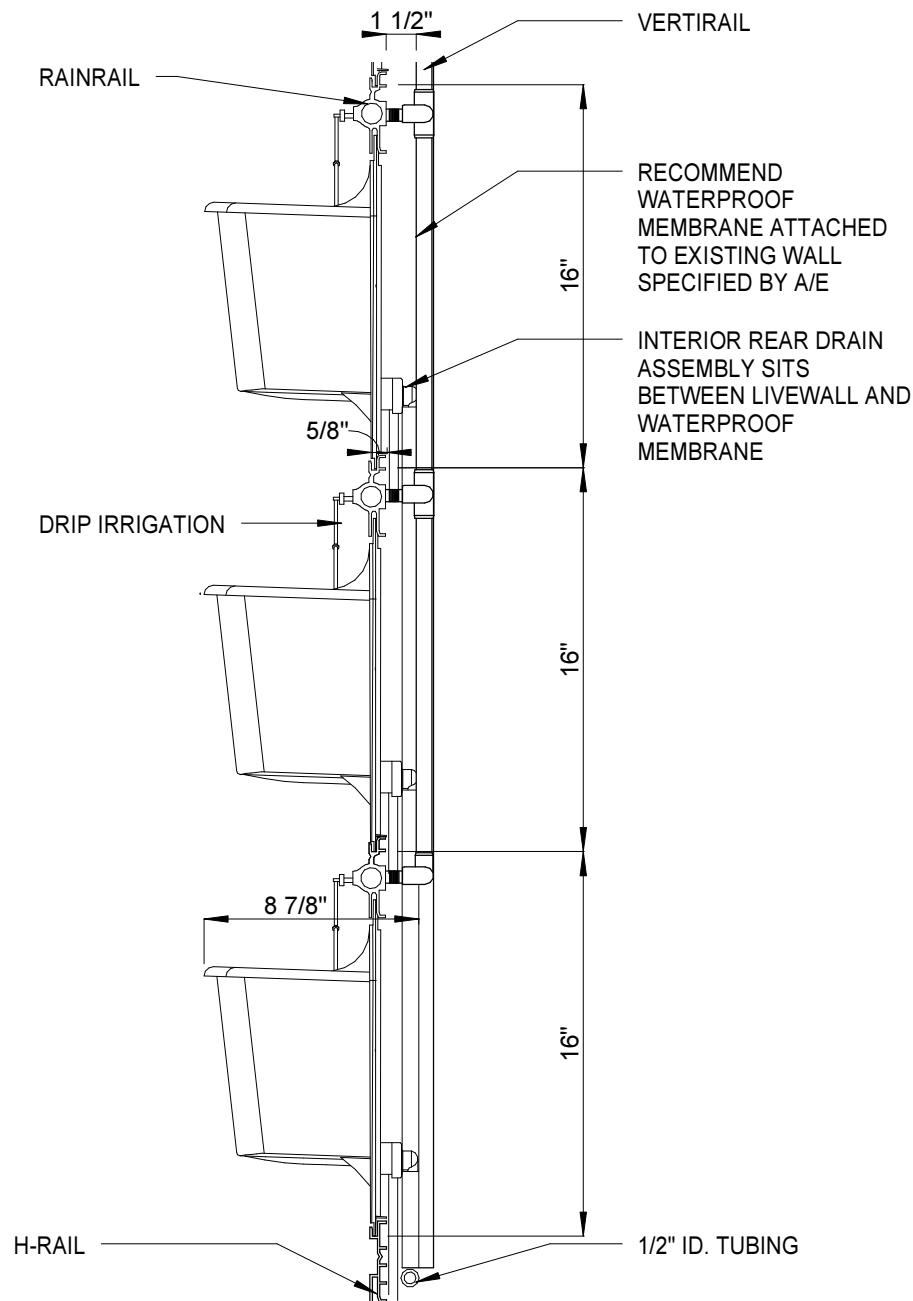


INTERIOR APPLICATION WALL SECTION WITH REAR DRAIN ASSEMBLY

LW-W-6



① INTERIOR APPLICATION WALL SECTION WITH REAR DRAIN ASSEMBLY
1 1/2" = 1'-0"

NOTES:

- 1 - INTERIOR APPLICATIONS UTILIZE DRIP IRRIGATION
- 2 - H-RAIL ATTACHES TO VERTIRAILS AND IS POSITIONED IN INTERIOR APPLICATIONS SO THAT 1-1/2" OF H-RAIL SITS BELOW BOTTOM OF VERTIRAIL (SEE DETAIL 3/03)
- 3 - RAINRAIL ATTACHES TO VERTIRAILS IN BOTH INTERIOR AND EXTERIOR APPLICATIONS
- 4 - WALLTERS ARE VERTICALLY SPACED 16" O.C. IN INTERIOR APPLICATIONS

LiveWall[®] BRAND

LiveWall, LLC
(877) 554-4065

www.livewall.com

P.O. Box 533
Spring Lake, MI 49456
USA